

Simple, Fast, Affordable
High-Performance Storage Platform



HIGHLIGHTS

Performance

Faster application response time
Reduced application runtime

Availability

Superior application resiliency
Fewer user complaints

Simplicity

Easier deployment
Better response to business needs

Affordability

Lower operating costs

Performance-Optimized Deduplication

Selectable Dedupe by volume

Enhanced Matrixed RAID Data Allocation

Up to 60 individually hot-swappable SSDs

Writes to SSD's balanced across drives for better performance and wear

ISE Software for Resilient In-place Media Loss

Less frequent drive replacement

Global parity and spare allocation

Failed drives do not have same urgency for replacement as traditional arrays

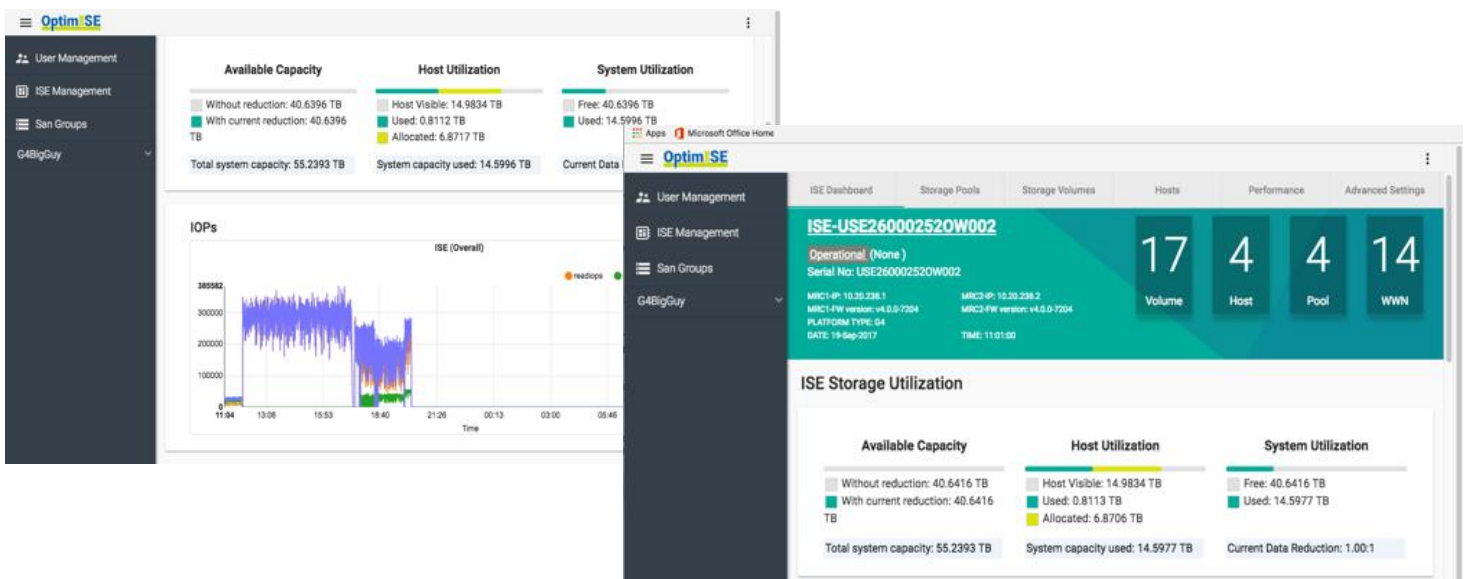
Web-based Management Interface

Simplified management with XIO G4's OptimISE™

Support for multi-system management through single session

At-a-glance and in-depth performance metrics

Customizable widget-based layout



Enterprise Data Services

- ✓ Data Reduction by Volume
- ✓ High Availability
- ✓ Snapshots*
- ✓ Replication*
- ✓ QoS
- ✓ Encryption
- ✓ Management REST API
- ✓ Simple Web-based Management
- ✓ Monitored Telemetry
- ✓ Predictive Analytics

XIO G4 PRODUCT SPECIFICATIONS

Performance	<1ms LATENCY @ 400,000 IOPS
Bandwidth (max)	5.4 GB/sec
CAPACITY	
Usable (max)	(min 10 drives) 24TB to 290 TB (max 60 drives)
Effective (max)**	97 TB to 1.1 PB
CONNECTIVITY	
Hosts	2U Dual-Controller Active/Active 8Gb FC 4 ports per controller
PHYSICAL	
Dimensions	2RU – 3.4" x 16.88" x 39.27" Rail kit supports 20" to 28.5" rack depth
Weight	64 lb. / 29.1 kg – (without drives)
Power & Cooling	Two hot-swappable 1600 Watt PSUs, 12V output @ 130A (1600watts) Auto ranging 200-240VAC, 50-60Hz input. Current sharing

*SW upgrade in future release. **Effective capacity assuming 4:1

